



KAPUNDA

High School



KHS Password Guide – Common Accounts

At KHS you have multiple accounts and passwords for various services and applications. This guide is designed to help you understand the different accounts and when to use them. For troubleshooting passwords see next page.

Many of the accounts below require a “Strong” password (8 or more characters with Uppercase or Lowercase letters, numbers and special characters).

DEFAULT Accounts – All staff and students at KHS receive these.

KHS NETWORK ACCOUNT

Default Student Username: [firstname lastname](#)

This account is created and managed by the school. If you have trouble with this account it can be reset by the IT Helpdesk or Resource Centre. This account is used for the following...

- **WiFi Access** (used when joining the BYOD Network)
- **Daymap**
- **Printers** (use when adding new printers)
- **Internet** (if you get a pop-up window prompting you for proxy details)
* Some Microsoft products may require your full network credentials. See next page for details.

LEARNLINK ACCOUNT

Default Username: [firstname.lastname123@schools.sa.edu.au](#)

This account is provided by the Department for Education upon enrolment in SA public schools. If you have moved schools your account may still be active. The IT Helpdesk or all teachers have the ability to reset your password. This account is used for...

- **Learnlink**
- **Office 365** and Onedrive (sign in at Office.com or when activating Office Products)
- **Adobe Creative Cloud** (This account has been linked to Learnlink to reduce logins)

OTHER Accounts – Used by some subjects or year levels

GOOGLE Classroom

Default Username: [firstname.lastname123@kapundahs.sa.edu.au](#)

Not to be confused with your Learnlink account. This is a separate account for Google only. The username has been created almost the same to help you remember it, but please note the different “kapundahs”.

TV4 Education

Default Username: [learnlink email address](#)

This is used for the online librarysolutions website for viewing subject related tv content.

AUTODESK (Fusion 360, Inventor, Eagle, Tinkercad)

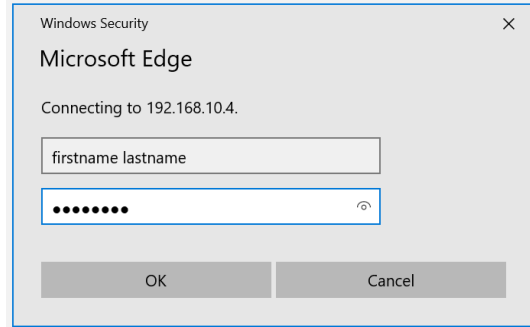
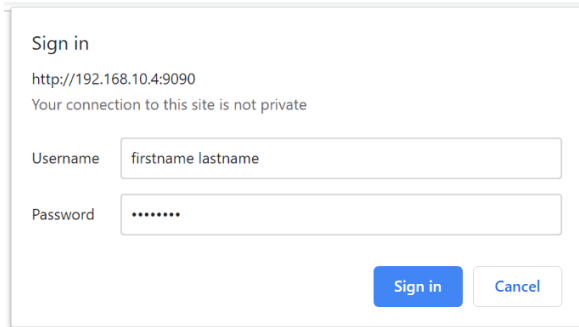
Recommended Username: [learnlink email address](#)

This is a personal account and we recommend using your learnlink address when registering. You must manage your password yourself, so please create something you will remember. This account provides access to Fusion 360, Inventor, Eagle, Tinkercad and other Autodesk products.

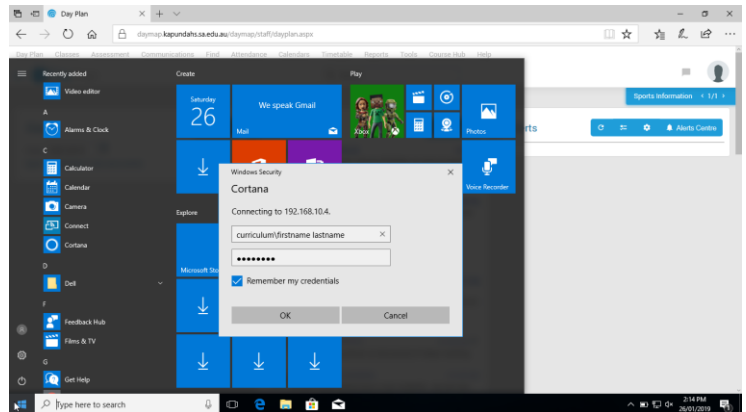
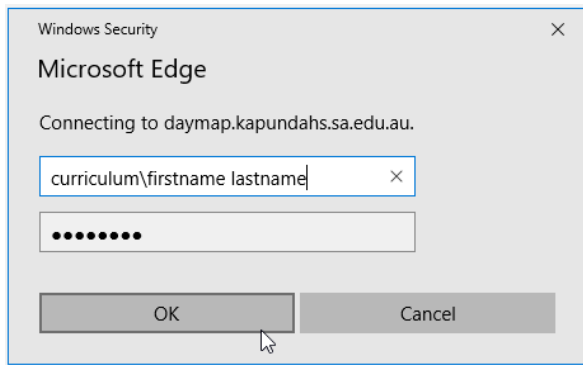


KHS Password Guide - Troubleshooting

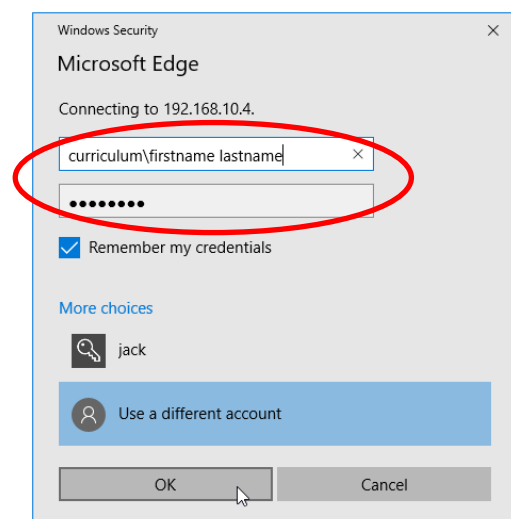
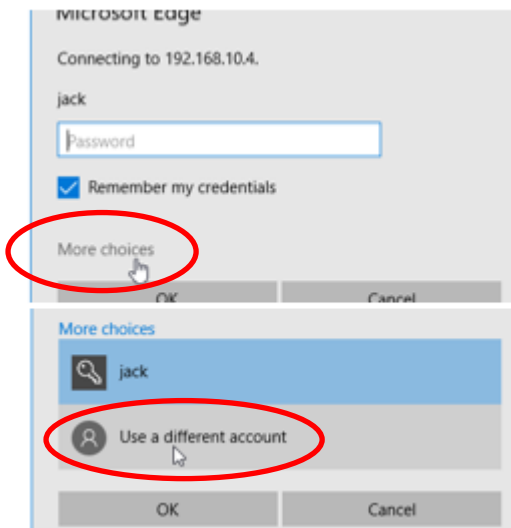
If you get presented with a box similar to those below while browsing the internet asking for proxy credentials. Use your KHS Network Account details as shown.



Some Microsoft products (Office, Internet Explorer) require extra network credentials to authenticate correctly. If the above simple options fail, try entering the KHS network name, first followed by a back slash “\”. Our network is the “**Curriculum**” network. See examples below...



If still not working like the example below. You may need to click “**More Choices**” and then select “**Use a different account**” first. Then enter the network name\account and password. E.g. curriculum\firstname lastname



If you still have trouble, please ask a teacher or at the IT Helpdesk for help.

Remember: Use a strong password where possible, try to choose a password that is easy for you to remember, but hard for others to guess. And, never share your passwords with others.